

# D.

DEFINITIVE TECHNOLOGY



## BP9000 | SERIES

High-Performance Component Loudspeakers

PRODUCT INFORMATION SHEET



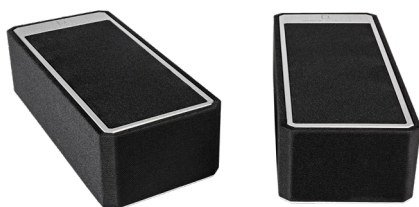
# D.

## BP9000 | SERIES

### High-Performance Component Loudspeakers



BP9060 HIGH-PERFORMANCE TOWER SPEAKER



A90 HEIGHT MODULE

#### HIGH-PERFORMANCE COMPONENT AUDIO SPEAKERS

The arrival of the BP9000 Series ushers true high-performance, full-range sound into a new era. Redesigned from the ground up with improved acoustic materials, machined, aircraft-grade aluminum details, and sharper lines to enhance its minimalist aesthetic, it is the new absolute other speakers can only hope to achieve.

Beyond its striking and visual allure, the entire series is tuned to perfection—totally re-engineered with improvements that cascade across every one of our patented audio technologies. From Forward Focused Bipolar Array, to built-in powered subwoofers, to Intelligent Bass Control, to seamless Dolby Atmos integration and DTS:X compatibility, the BP9000 Series offers the big, room-filling, yet precise sound you demand with an elegant footprint that makes every single day of ownership a marvel to behold. This is what obsession sounds like.

#### SERIES FEATURES

##### Patented Forward-Focused Bipolar Array

Forward Focused Bipolar Array offers the ultimate balance between room-filling sound and a precise center image, while giving you total placement flexibility.

##### Integrated Powered Subwoofer and Dual Bass Radiators

The best loudspeaker is one that reproduces balance between the highest highs down to ground-shaking lows as accurately as possible. Our integrated powered subwoofer matched with its respective bass radiator offers deeper, more impactful bass without the need to add a separate subwoofer.

##### Intelligent Bass Control

Intelligent Bass Control™ is our latest advancement that gives you the ability to modulate deep bass up or down in level while simultaneously maintaining mid-range tonal balance.

##### Aluminum Dome Tweeters

Crystal clear highs bring the most demanding audio to life. Our tweeters play higher in frequency than what is heard by the human ear, creating an authentic reproduction of sound as the artist intends in the studio or concert hall.

##### BDSS – Balanced Double Surround System

Improves driver excursion which results in the selected driver producing bass output usually associated with a larger driver, while retaining the improved dispersion and midrange definition of a smaller driver.

##### LED Backlit Definitive Technology Logo

To highlight the integrated powered subwoofer and show that your speaker is receiving a signal, we've added an LED logo at the bottom front panel. Turn it on or off at your leisure and also note that it will automatically turn off/standby after 20 minutes of no active signal.

##### Dolby Atmos Certified & DTS:X Compatible

We've integrated a hidden connector port in the BP9060, BP9040 and BP9020 that fits our A90 speaker module seamlessly (*sold separately*). Simply remove the magnetically-sealed, acoustically treated aluminum top panel from the speaker and firmly align and place the A90 elevation speaker module within the top of your speaker to hear and feel multi-dimensional sound (*requires a Dolby Atmos/DTS:X-enabled receiver and Dolby Atmos/DTS:X-encoded source material*).

# D.

## BP9000 | SERIES

High-Performance Component Loudspeakers



### Cast Aluminum Base with Spikes and Floor Glides

The wide footprint increases overall stability of the tower speaker, while the addition of spikes or floor glides help keep your speakers firmly in place whether on carpet or other solid floor surfaces like hardwood or cement.

### Minimalist Design, Timeless Appeal

Powerful minimalist aesthetic with precision-machined components creates a sophisticated look to complement the most distinguished home theater. The sharp lines of the BP9000 Series also echo its precise sonic signature.

### Acoustically Transparent Grille

Enjoy the subtle elegance of the speaker design without having to remove a speaker grille to enjoy natural, uncolored sound.

### Totally Inert, Resonance-Free Cabinet

Maximum rigidity with strategically placed bracing improves imaging while reducing resonance, further reinforcing our clean and powerful sound.

### BP9080x

We've integrated a seamless two-way height speaker module within the top of the BP9080x so you can hear and feel multi-dimensional sound (*requires a Dolby Atmos/DTS:X-enabled receiver and Dolby Atmos/DTS:X-encoded source material*).

## WHAT OBSESSION SOUNDS LIKE™

Our mission is a singular obsession, built on more than 25 years of constant innovation. It is a relentless pursuit for flawless sound that truly stands alone. What drives that earnest approach to always build upon the strengths of our lasting audio achievements? Never resting on our sonic laurels, and never settling on the status quo. Intelligent design, superior materials, precision workmanship, cutting-edge technology, audiophile-grade sound—it's at the core of every product we create and everything we do.



# BP9000 | SERIES

## High-Performance Component Loudspeakers

	BP9020	BP9040	BP9060	BP9080x
<b>SPECIFICATIONS</b>				
DIMENSIONS	35.5" H x 11" W x 13" D (88.3cm H x 27.9 cm W x 33 cm D)	39" H x 11" W x 13" D (99.0cm H x 27.9 cm W x 33 cm D)	44.5" H x 11" W x 13" D (113.1 cm H x 15.3 cm W x 33 cm D)	51.5" H x 12" W x 16" D (130.8cm H x 30.5 cm W x 40.6 cm D)
PRODUCT WEIGHT	30 lbs.	36 lbs.	50 lbs.	62 lbs.
FRONT ARRAY DRIVER COMPLEMENT	(2) 3.5" (8.9 cm) drivers, (1) 1" (2.5 cm) aluminum dome tweeter	(2) 4.5" (11.4 cm) drivers, (1) 1" (2.5 cm) aluminum dome tweeter	(2) 4.5" (11.4 cm) drivers, (1) 1" (2.5cm) aluminum dome tweeter	(2) 5.25" (13.3 cm) drivers, (1) 1"(2.5 cm) aluminum dome tweeter
REAR ARRAY DRIVER COMPLEMENT	(1) 3.5" (8.9 cm) driver	(1) 4.5" (11.4 cm) driver, (1) 1" (2.5 cm) aluminum dome tweeter	(1) 4.5" (11.4 cm) driver, (1) 1" (2.5 cm) aluminum dome tweeter	(2) 5.25" (13.3 cm) drivers, (1) 1"(2.5 cm) aluminum dome tweeter
SUBWOOFER SYSTEM DRIVER COMPLEMENT	(1) 8" (20.3 cm) woofer	(1) 8" (20.3 cm) woofer, (2) 8" (20.3 cm) bass radiators	(1) 10" (25.4 cm) woofer, (2) 10" (25.4 cm) bass radiators	(1) 12" (30.5 cm) woofer, (2) 12" (30.5 cm) bass radiators
FREQUENCY RESPONSE	30Hz-22kHz	29Hz-22kHz	28Hz-22kHz	25Hz-22kHz
SENSITIVITY	89dB SPL	90dB SPL	90dB SPL	92dB SPL
NOMINAL IMPEDANCE	4 ohms	4 ohms	4 ohms	4 ohms
RECOMMENDED INPUT POWER	50-200W	50-300W	50-300W	50-300W
INTERNAL AMPLIFIER POWER	80W	200W	200W	375W
HEIGHT MODULE DRIVER COMPLEMENT	none	none	none	(1) 5.25" (13.3 cm) drivers, (1) 1" (2.5 cm) aluminum dome tweeters
A90 COMPATIBLE	yes	yes	yes	integrated

	CS9040	CS9060	CS9080	A90	SR9040BP	SR9080BP
<b>SPECIFICATIONS</b>						
DIMENSIONS	5.95" H x 20.75" W x 12" D (15.1 cm H x 52.7 cm W x 30.4 cm D)	5.95" H x 20.75" W x 12" D (15.1 cm H x 52.7cm W x 30.4 cm D)	7" H x 23" W x 14.25" D (17.8 cm H x 58.4 cm W x 36.2 cm D)	3.75" H x 6" W x 13" D (9.5 cm x 15.2 cm x 33 cm)	9.5" H x 7.8125" W x 5.375" D (24.12 cm x 19.8 cm x 13.5 cm)	15.625" H x 9" W x 6.0625" D (39.69 cm x 22.76 cm x 15.5 cm)
PRODUCT WEIGHT	20 lbs.	26 lbs.	36 lbs.	6 lbs.		
FRONT ARRAY DRIVER COMPLEMENT	2) 4.5" (11.4 cm) drivers, (1) 1" (2.5 cm) aluminum dome tweeter	(2) 4.5" (11.4 cm) drivers, (1) 1" (2.5 cm) aluminum dome tweeter	(2) 5.25" (13.3 cm) drivers, (1) 1" (2.5 cm) aluminum dome tweeter	none	(2) 3.5" (8.89cm) drivers, (2) 1" (2.5 cm) aluminum dome tweeter	(2) 4.5" (11.4 cm) drivers, (2) 1" (2.5 cm) aluminum dome tweeter
REAR ARRAY DRIVER COMPLEMENT	none	none	none	none	none	none
SUBWOOFER SYSTEM DRIVER COMPLEMENT	(1) 8" (20.3 cm) bass radiator	(1) 8" (20.3 cm) woofer	(1) 8" (20.3 cm) woofer; (1) 10" (25.4 cm) bass radiator	none	none	none
FREQUENCY RESPONSE	50Hz-22kHz	34Hz-22kHz	26Hz-22kHz	86Hz-22kHz	50 Hz – 30 kHz	40 Hz – 30 kHz
SENSITIVITY	89dB SPL	91dB SPL	92dB SPL	86.5dB	92 dB	92 dB
NOMINAL IMPEDANCE	4 ohms	4 ohms	4 ohms	4 ohms	8 ohms	8 ohms
RECOMMENDED INPUT POWER	50-200W	50-300W	50-300W	25-100W	20 – 150w	20 – 200w
INTERNAL AMPLIFIER POWER	none	80W	200W	none	none	none
HEIGHT MODULE DRIVER COMPLEMENT	none	none	none	(1) 4.5" driver, (1) 1" aluminum dome tweeter	none	none